

## StromPi3 console commands

### Start the Strompi console

```
startstrompicomsole or sspc
```

### Close the console

```
quit
```

### Show all commands

```
help
```

### Set the Clock of the StromPi RTC

```
set-clock <hour> <minutes> <seconds>
```

### Set the Date of the StromPi RTC-Clock

```
set-date <day> <month> <year> <weekday>
```

### Set the Shutdown Timer to <shutdown-seconds>

```
set-timer <seconds>
```

### Show adc output voltage

```
adc-output
```

Set Strompi mode. <1> for mUSB -> Wide. <2> for Wide -> mUSB.

<3> for mUSB -> Battery. <4> for Wide -> Battery

```
strompi-mode <number>
```

### Show the time of the Strompi RTC-Clock

```
time-output
```

Set alarm mode. <1> for time-alarm. <2> for date-alarm. <3> for weekday-alarm

```
alarm-mode <number>
```

Enable <1> or disable <0> alarm.

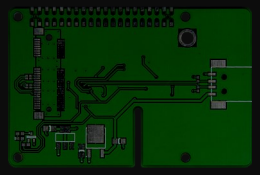
```
alarm-enable <number>
```

### Set time for the alarm

```
alarm-set-time <hour> <minute>
```

### Set date for the alarm

```
alarm-set-date <date> <month>
```



## StromPi3 console commands

Set the weekday for the alarm. (Mo. - Sun. -> 1 - 7)

```
alarm-set-weekday <weekday>
```

Set poweroff alarm on <1> or off <0>.

```
poweroff-enable <number>
```

Set the time for the poweroff alarm

```
poweroff-set-time <hour> <minute>
```

Enable <1> or disable <0> the warning for failure of the primary power supply.

```
warning-enable <number>
```

Enable <1> or disable <0> the shutdown of the Raspberry Pi.

```
shutdown-enable <number>
```

Show the Current Configurations

```
show-status
```

Shutdown the Raspberry Pi

```
poweroff
```

Show the current time of the Raspberry Pi

```
time-rpi
```

Show the current date of the Raspberry Pi

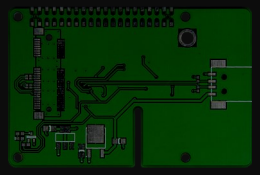
```
date-rpi
```

Show the current status of the Raspberry Pi

```
status-rpi
```

Enables <1> or disables <0> the Serial-Less Mode of the StromPi3

```
serialless-mode <number>
```



## StromPi3 console commands

Configure the StromPi 3 to shutdown the Raspberry Pi when the Battery Level falls below the configured Battery-Voltagelevel

<0>: Disabled ; <1>: Below 10% ; <2>: Below 25% ; <3>: Below 50%

```
batlevel-shutdown <level-number>
```

Enable <1> or disable <0> the PowerOff-Interval-Alarm

```
interval-enable <option>
```

Define the OnTime of the PowerOff-Interval-Alarm in Minutes

```
interval-ontime <min>
```

Define the OffTime of the PowerOff-Interval-Alarm in Minutes

```
interval-offtime <min>
```